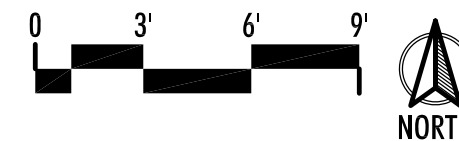
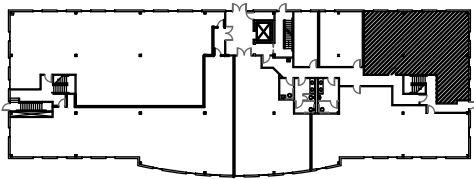
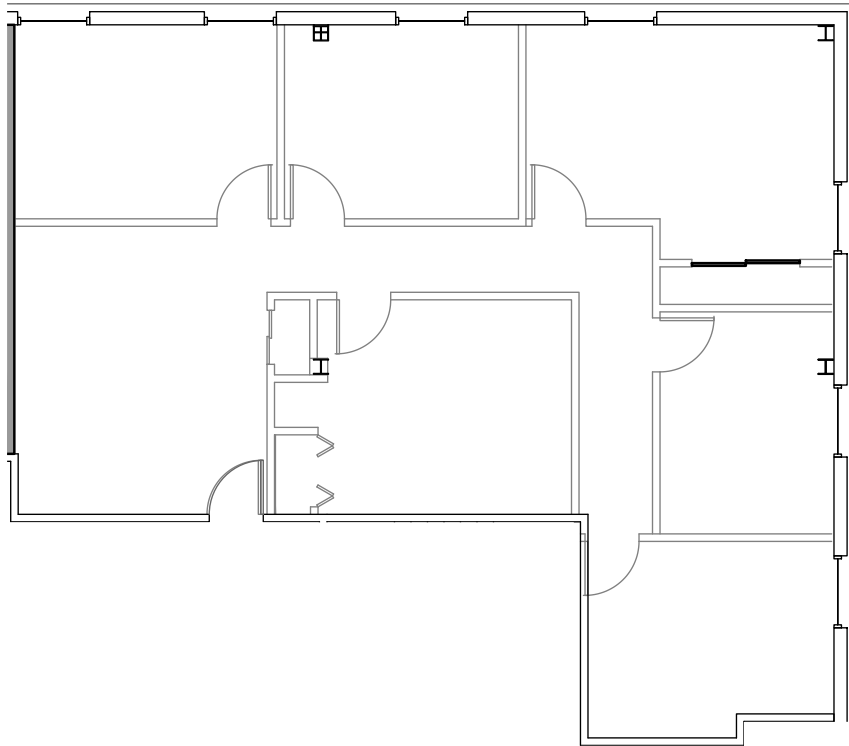


SUITE 102
1,855 RENTABLE S.F.



SUITE 102
740 REGENT STREET



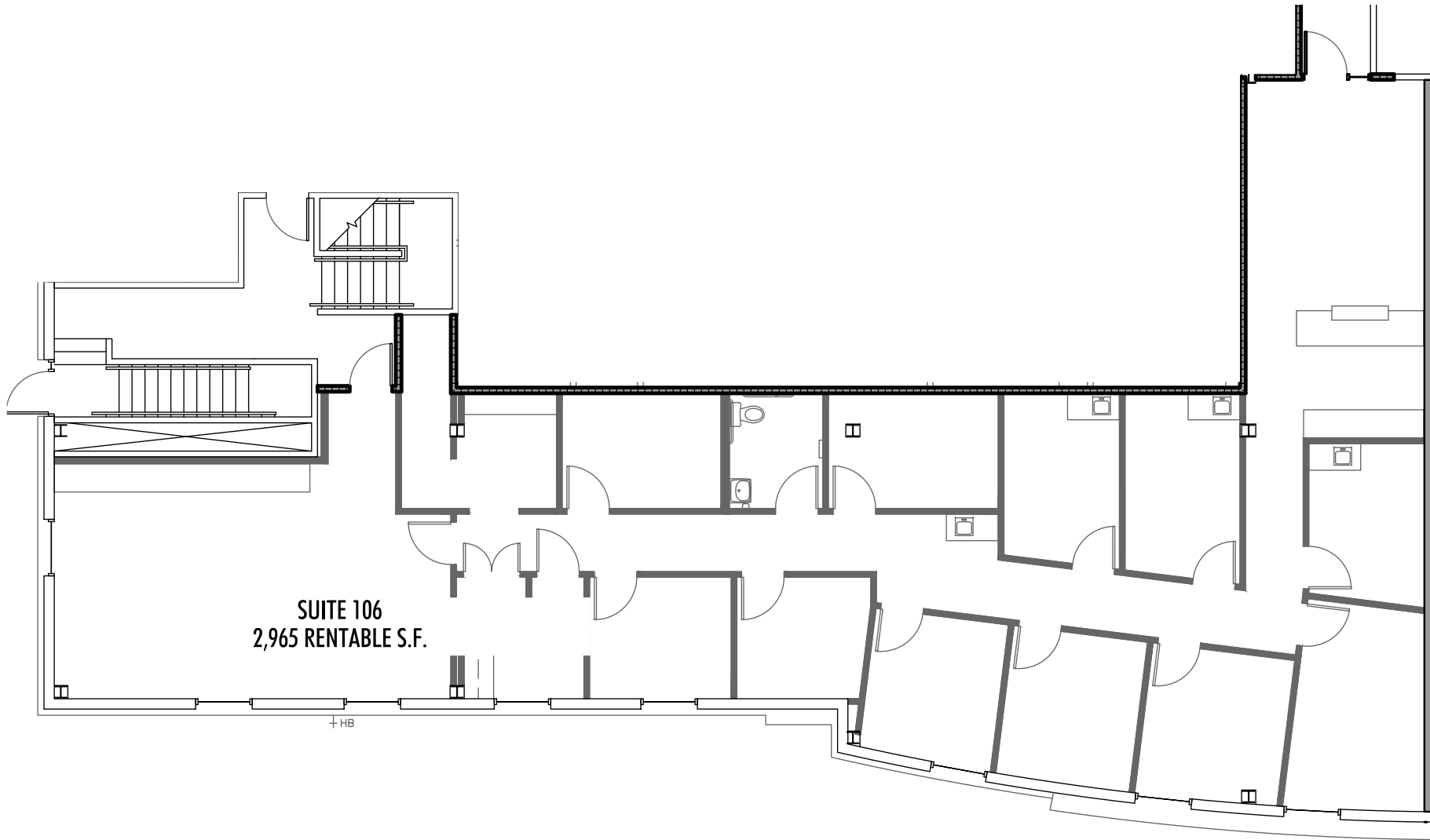


Location Plan

740 REGENT STREET
SUITE 103
1,575 Rentable S.F.

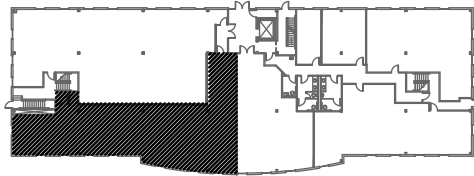


Alexander
Company



SUITE 106
2,965 RENTABLE S.F.

HB

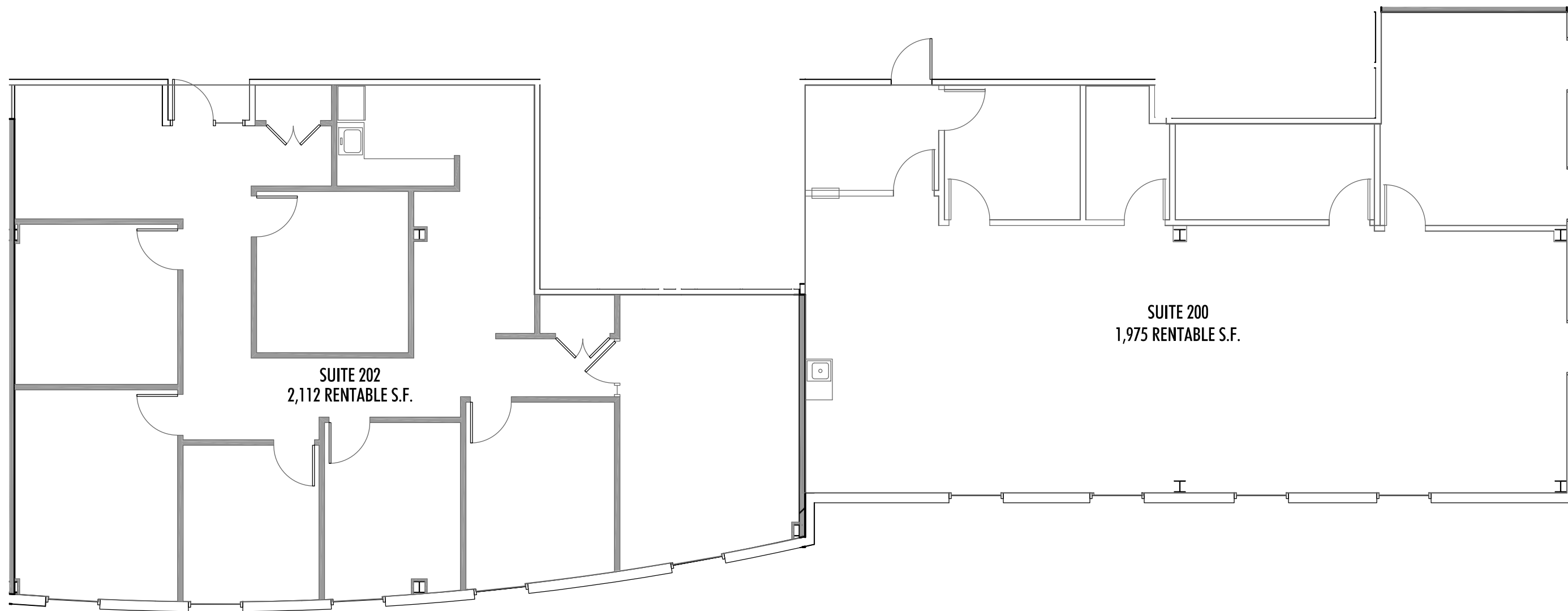


Location Plan

740 REGENT STREET
SUITE 106
2,965 Rentable S.F.



Alexander
Company



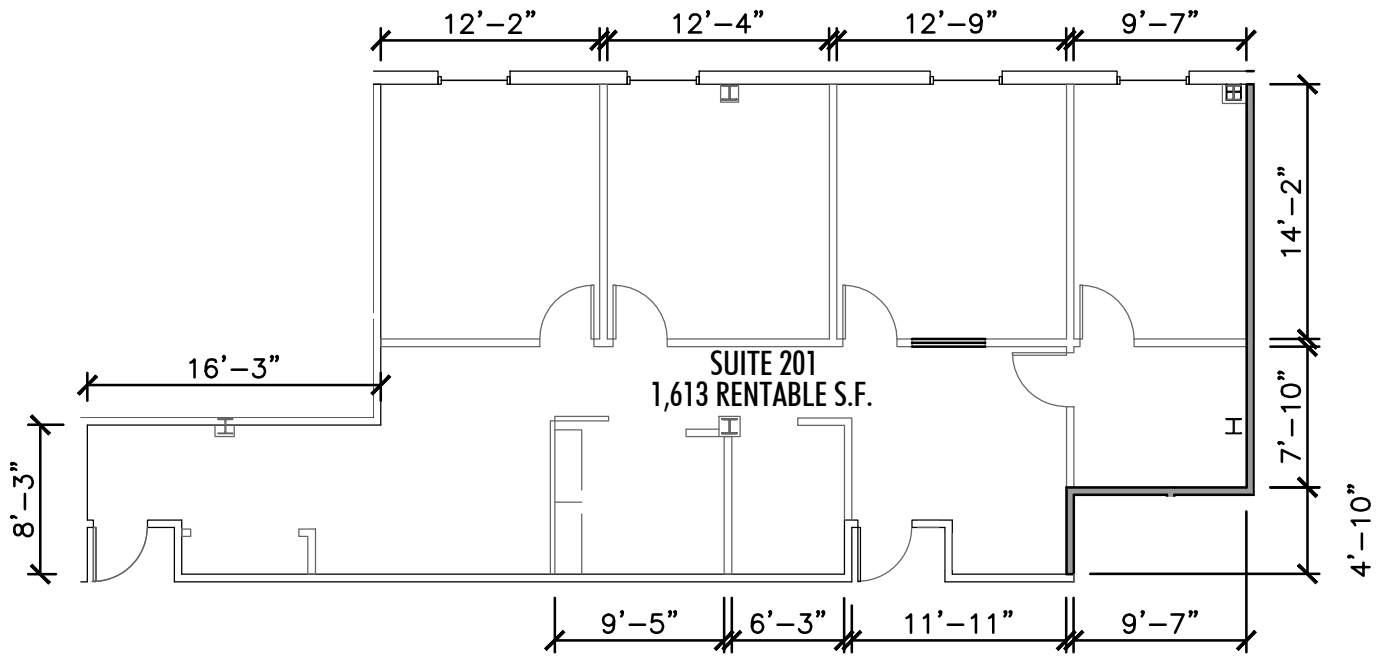
740 REGENT STREET



Location Plan



Alexander
Commercial



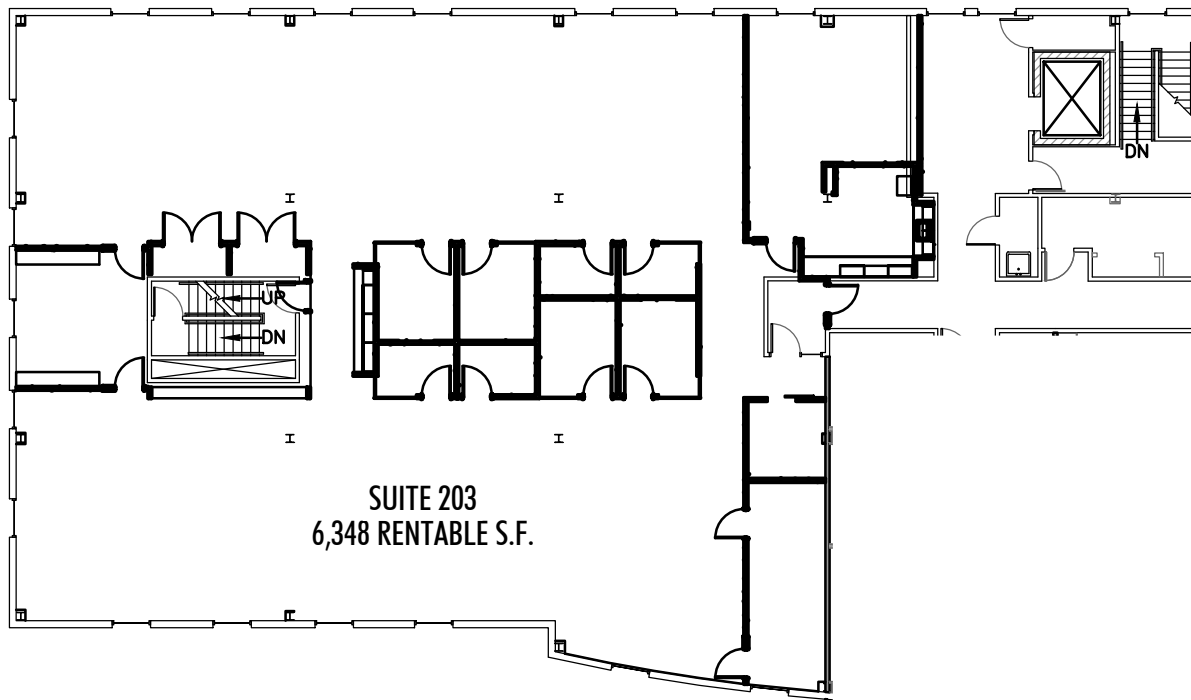
Alexander | RE
Real Estate Services

740 REGENT STREET
SUITE 201

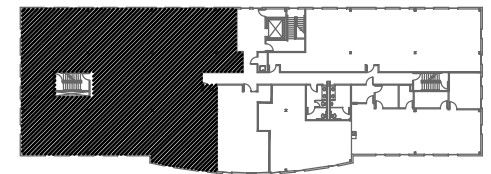


Location Plan





740 REGENT STREET SECOND FLOOR



Location Plan

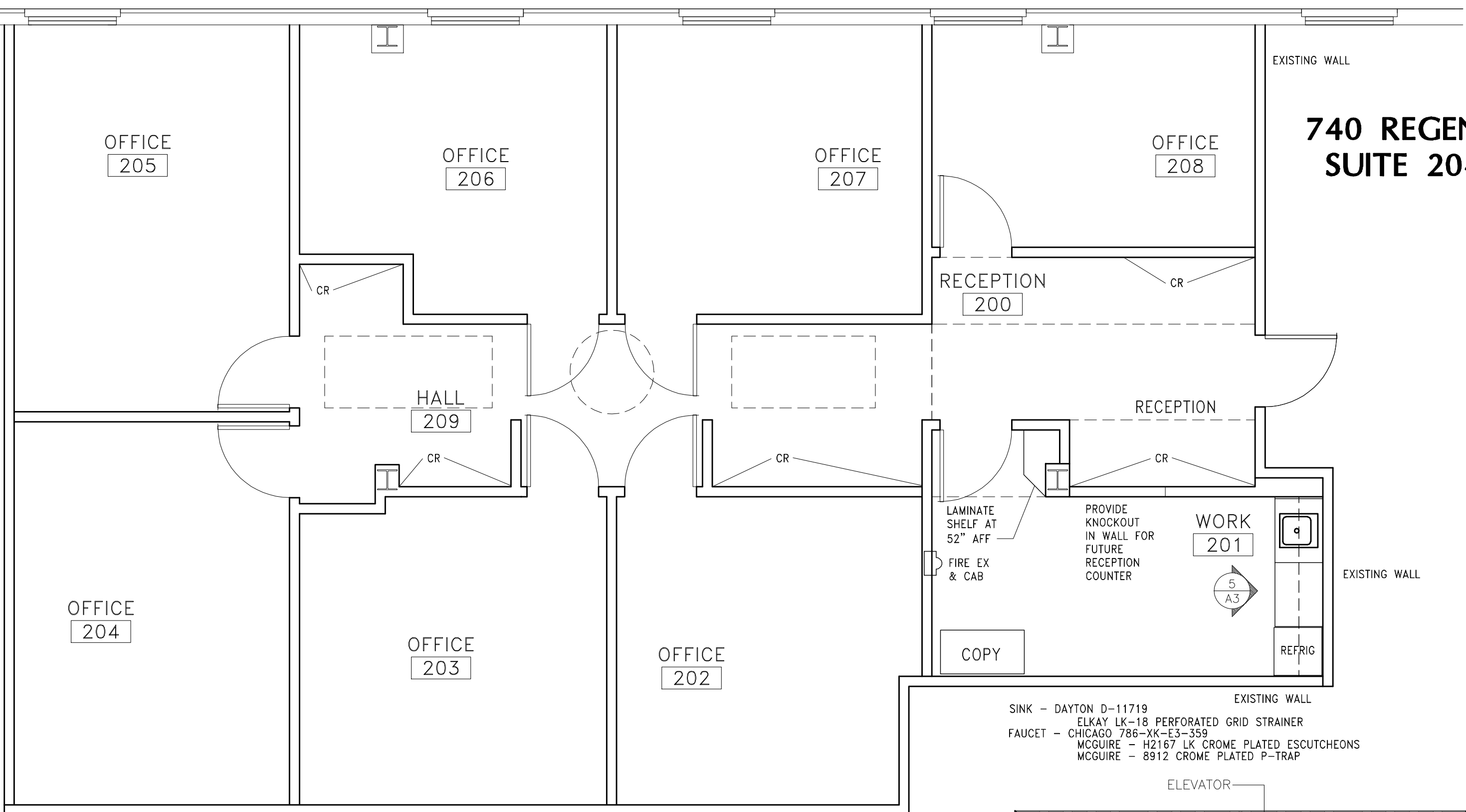


Alexander | **RE**
Real Estate Services

Area calculations are based upon ANSI/BOMA Z65.1-1996

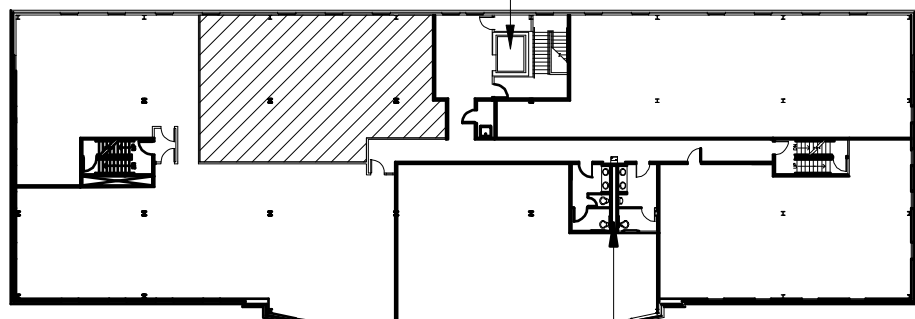
F:\Madison\740 Regent.241\dwgs\Mkt\740-FP02.dwg 3/21/2019

740 REGENT SUITE 204

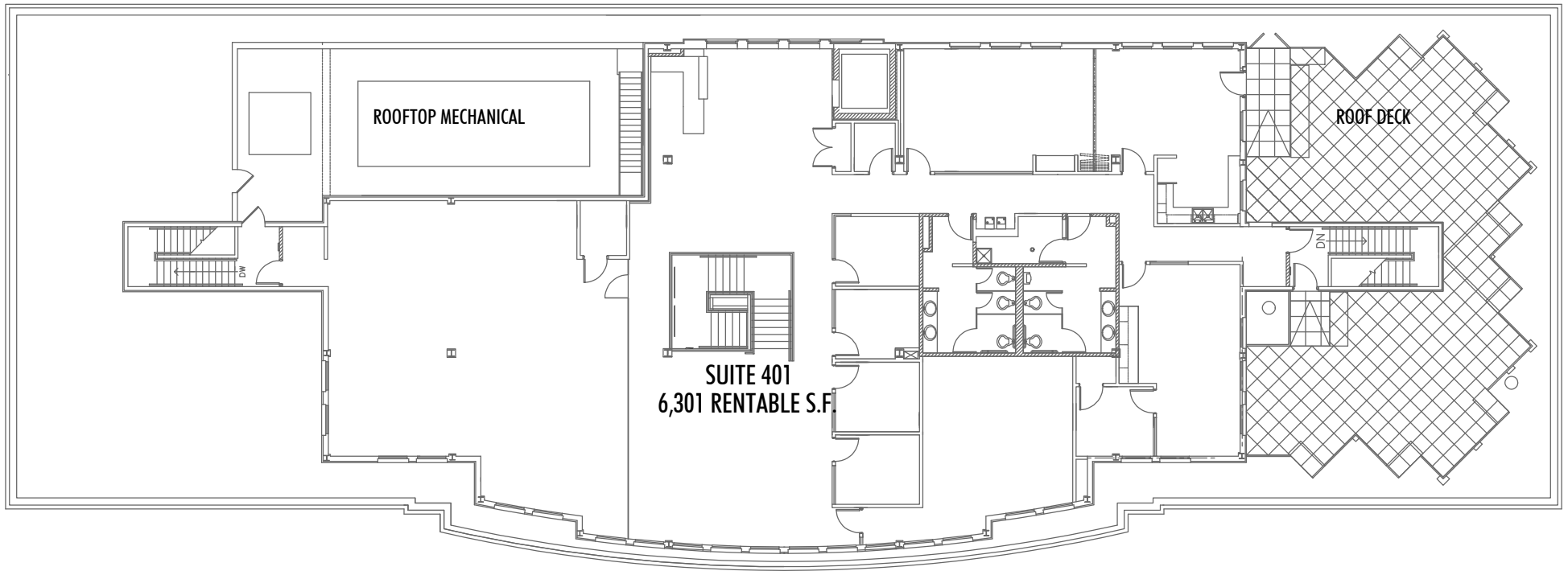


- SINK - DAYTON D-11719
- ELKAY LK-18 PERFORATED GRID STRAINER
- FAUCET - CHICAGO 786-XK-E3-359
- MCGUIRE - H2167 LK CROME PLATED ESCUTCHEONS
- MCGUIRE - 8912 CROME PLATED P-TRAP

ELEVATOR



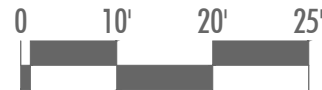
1
A1 **SUITE 204 PLAN**
SCALE : 1/4" = 1'-0"



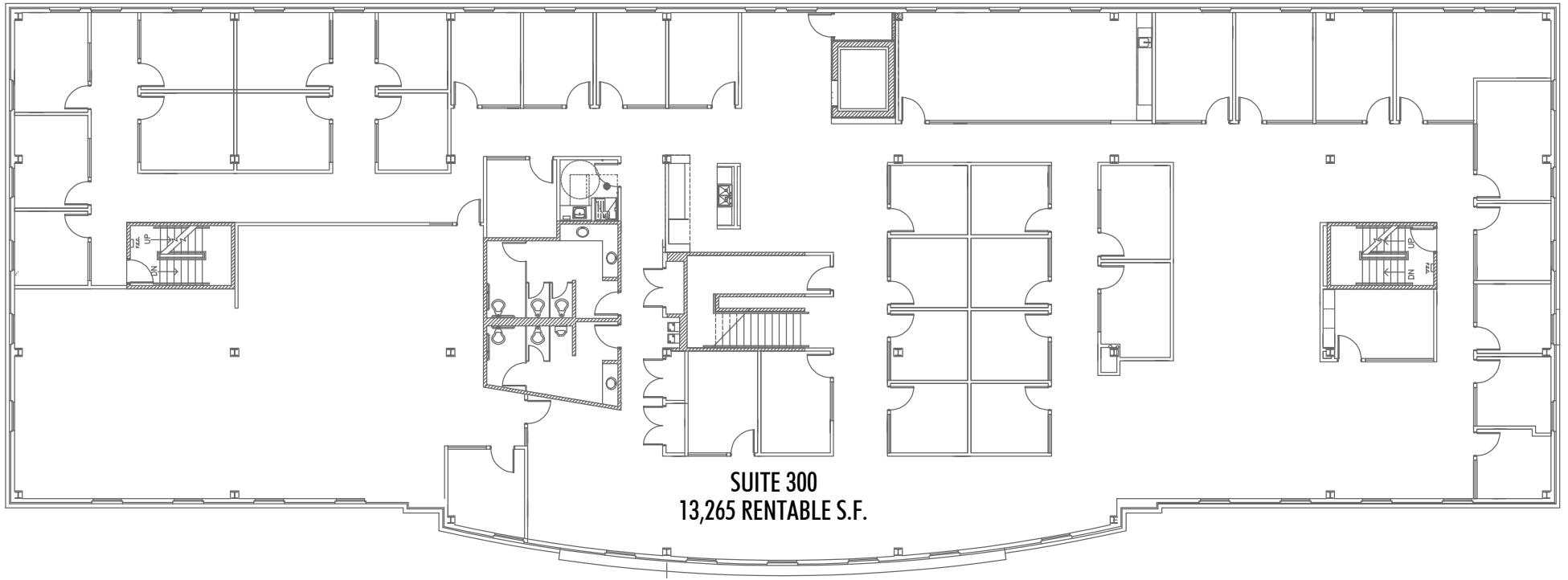
740 REGENT STREET THIRD FLOOR

Area calculations are based upon ANSI/BOMA Z65.1-1996

F:\Madison\740 Regent.241\dwgs\Mkt\740-FP04.dwg 3/12/2019



Alexander | **RE**
Real Estate Services



740 REGENT STREET THIRD FLOOR

Area calculations are based upon ANSI/BOMA Z65.1-1996

F:\Madison\740 Regent.241\dwgs\Mkt\740-FP03.dwg 3/12/2019



Alexander | **RE**
Real Estate Services